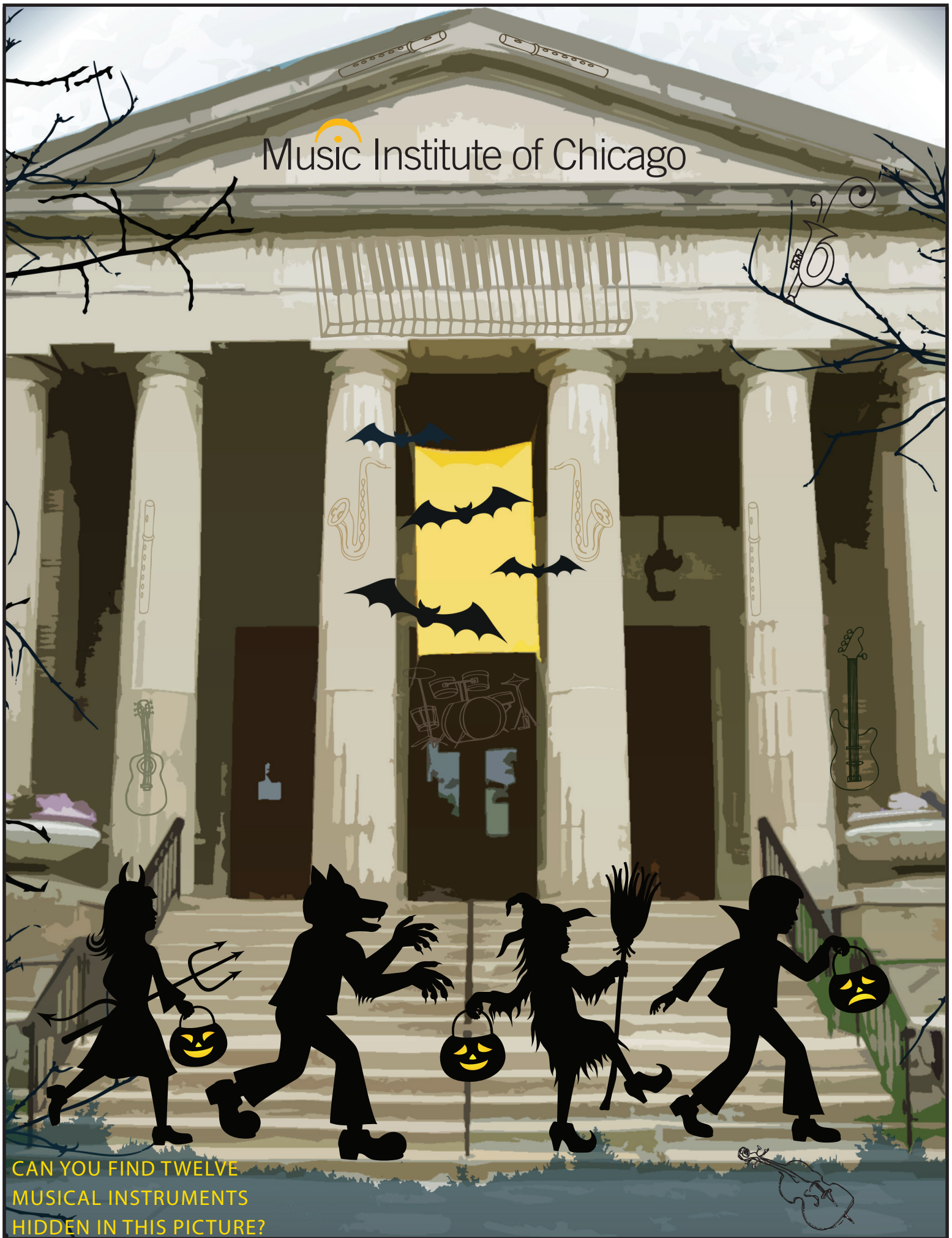


Music Institute of Chicago



CAN YOU FIND TWELVE
MUSICAL INSTRUMENTS
HIDDEN IN THIS PICTURE?

INSTRUMENTS BELONG TO FAMILIES - JUST LIKE PEOPLE!

Can you find and circle the instruments that belong to each of the families listed below?

STRINGS

violin
viola
cello
string bass
guitar
banjo
lute
viola da gamba

WOODWINDS

flute
recorder
oboe
bassoon
clarinet
saxophone

BRASS

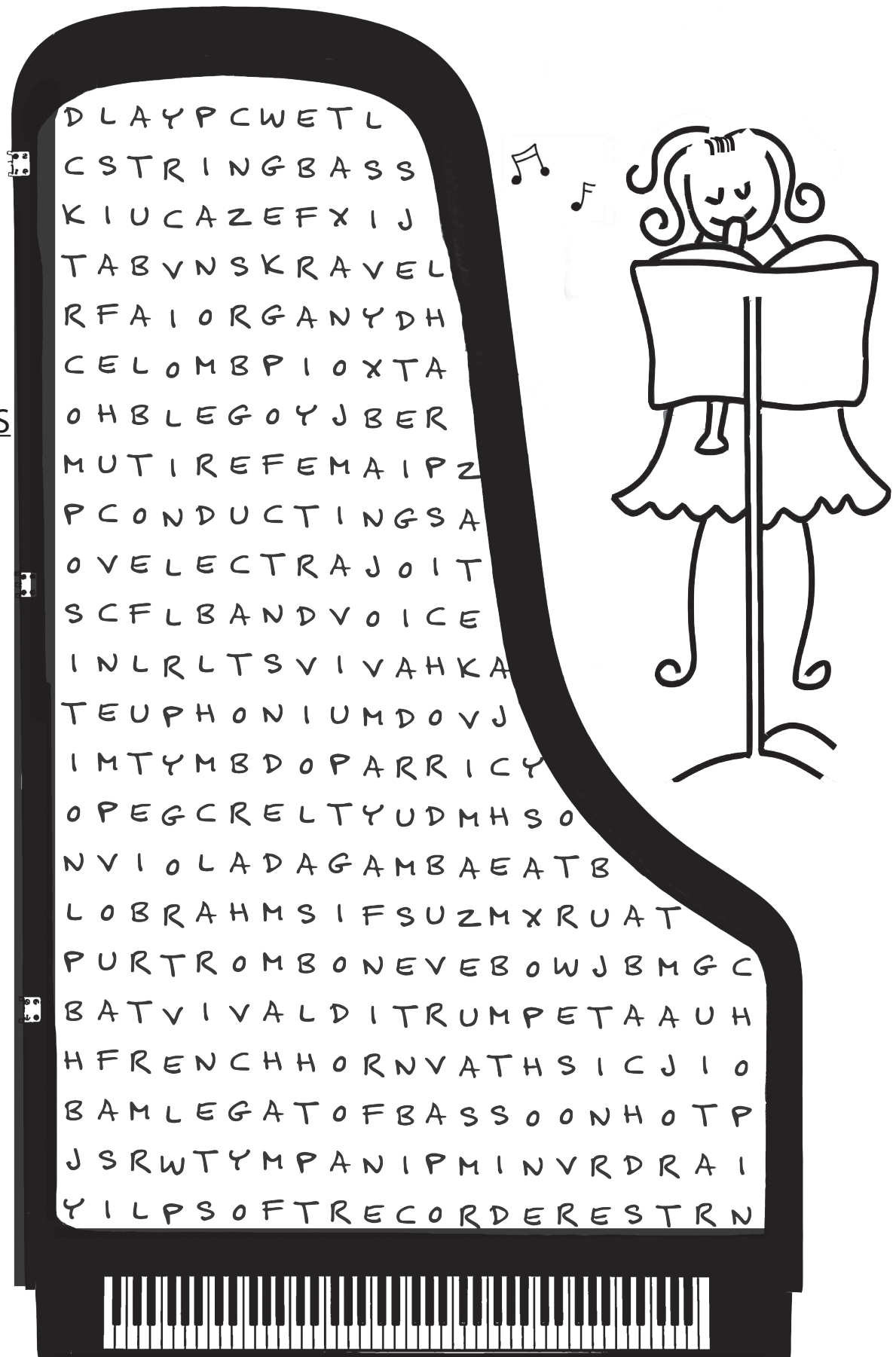
trumpet
French horn
trombone
euphonium
tuba

PERCUSSION

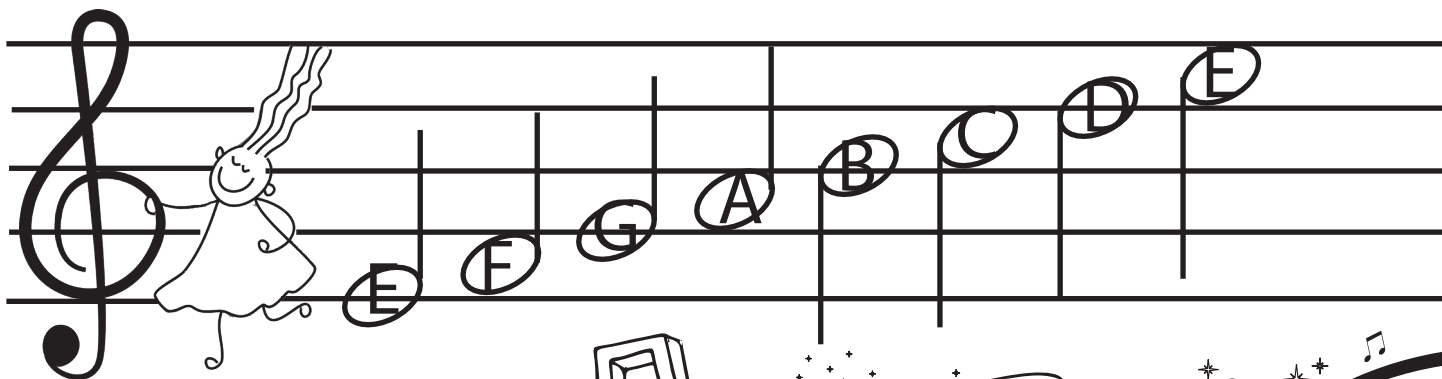
tympani
drum set

KEYBOARD

piano
organ
harpsichord



TREBLE CLEF



DID YOU KNOW??

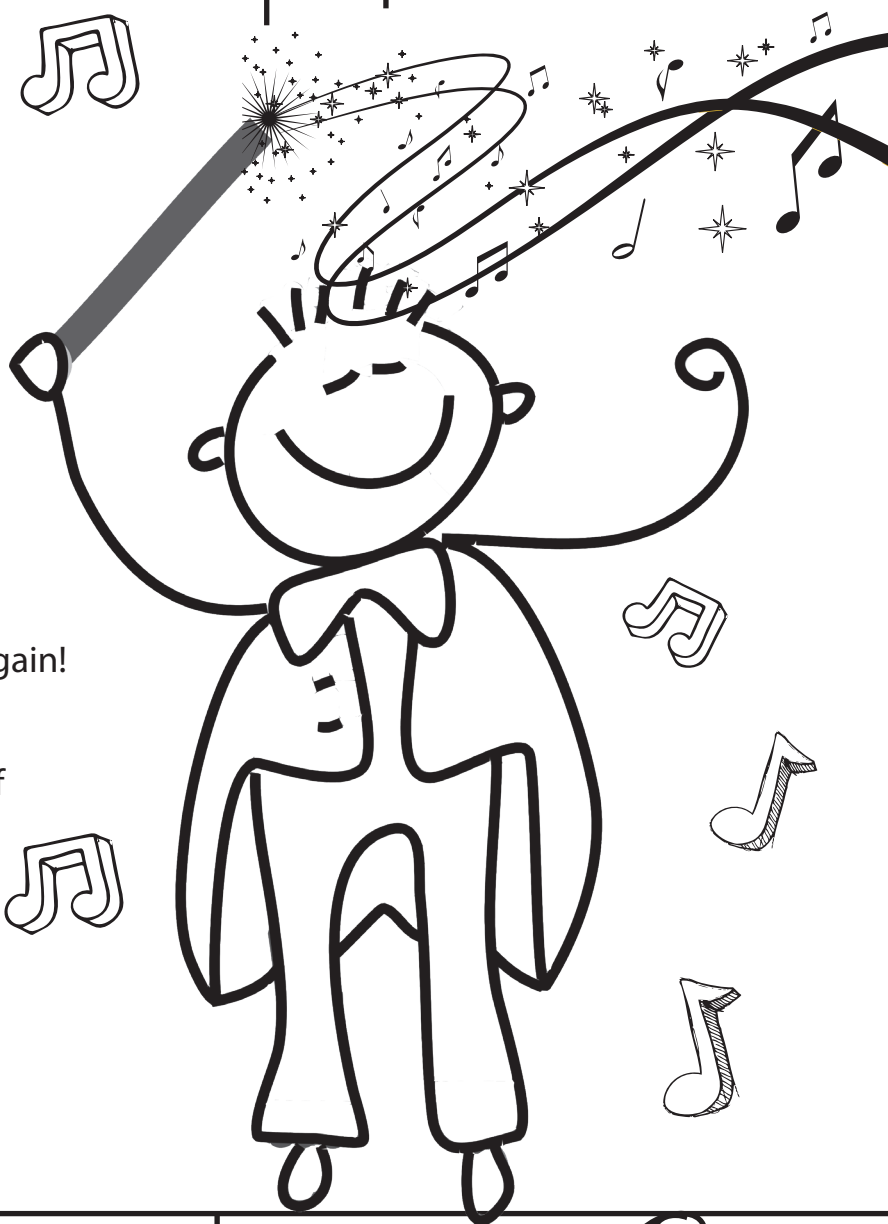
Musical notes are written on a grid of **5** lines and **4** spaces called a STAFF.

These lines and spaces represent the music alphabet.

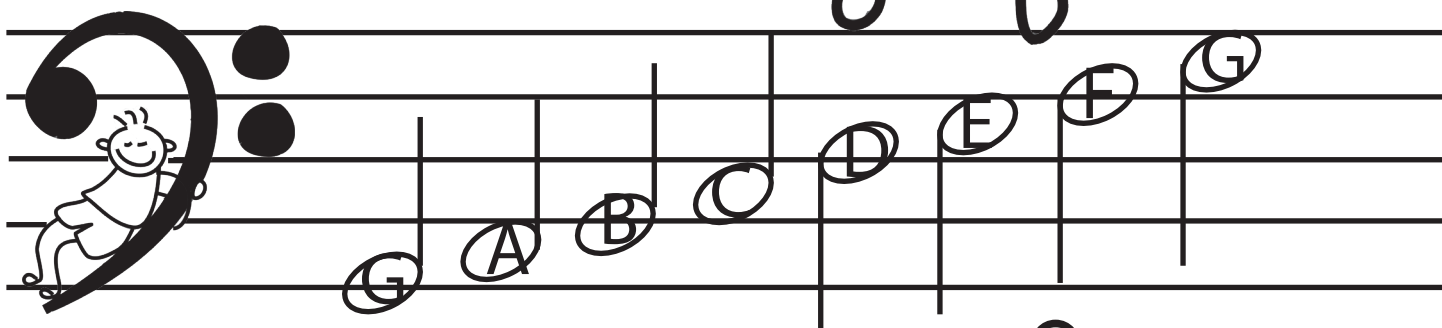
The musical alphabet includes **7** letters - A through G. Then they repeat over and over again!

When you join more than one staff together, they form a SCORE.

The score is the musical map used by a CONDUCTOR to lead a band, choir or orchestra.

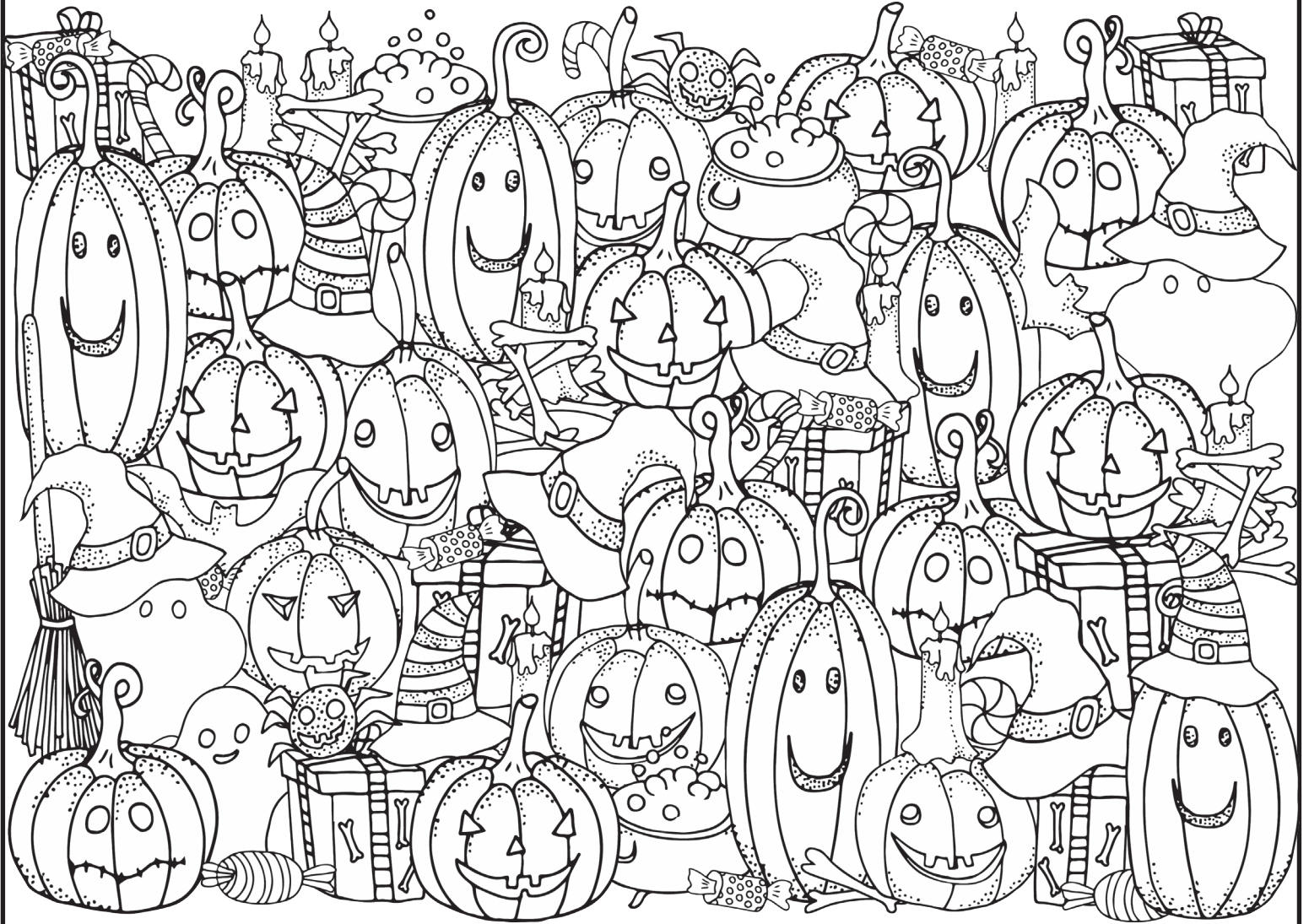


BASS CLEF



Music Institute of Chicago

HAPPY HALLOWEEN!



Join the MIC community today!

Enroll now for Chicagoland's best private lessons, classes and ensembles.

The Music Institute of Chicago has a wide array of programs across a neighborhood network of conveniently located campuses and provides the highest quality music instruction to thousands of students each year.

We invite you to explore our class offerings and look forward to serving your needs as you begin what we hope will be a lifelong relationship with music!

New students registering for private instruction online can earn a \$100 tuition credit.

Details at musicinst.org/get-started-mic